

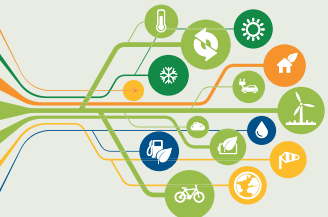
Why an EnMS ?

- At local level, the implementation of the EnMS in the municipal buildings was the consequence of understanding the importance of measures for EE, especially the need to **monitor the potential of energy** savings allowed by the rational use of energy and the long-term benefits of investing in EE solutions.
- **Timisoara EnMS is an on-line developed tool**, where each municipal public building is registered, and it stores information regarding the total volume of energy consumption (energy and water consumption), the data from the utility bills, meter reading, number of users, etc.



What you need to develop the EnMS ?

- Top management involvement,
- Steering committee, project committee ,
- **1 Municipal/city responsible** and **1 assistant** for the management of the EnMS (**data collection, training of users, data inspection**, upgrading etc.)
- 1 specialist/expert for data interpretation and technical analysis
- **1 energy responsible in each public buildings for collecting and introducing data into the EnMS,**
- 1 Energy Manager,
- **Time** – 6 months – 1 year.



Main steps in EnMS creating process

- **Set up the EnMS**, recommended an online tool – in Timisoara we use an already developed tool, realized by Romanian Energy Cities Network – Asociatia OER,
- **Collect the list of buildings** to be introduced in the Energy Management System and the names of the energy responsible/managers (officially assigned).
- **Create user accounts** for each building and passwords,
- **Collect official technical data of the buildings** (year of construction, construction information, heated surface, number of users, working hours, installations, suppliers companies, metering devices, etc.).
- **Collect consumption data** (energy and water bills for at least 12 months).



Main steps in EnMS creating process

- **Train and support the energy responsible/manager** to introduce the data into the EnM online system.
- **Organise site visits to the buildings** to analyse and understand the technical data, the consumptions, the link between technical status of installation and consumption,
- If necessary – the work can be supervised and supported by an **external expert**,
- **Prepare a final report** of the analysed year (12 months) that includes measures and recommendations for improvement of energy and water consumption in the analysed buildings.
- **Plan buildings' consumption and budget** for the following years in the EnMS.



Results of the EnMS created

- **Support to elaborate the SEAP**, data for needs analysis,
- **Energy Consumption Index in kWh/m²/year**,
- Water Consumption Index in cubic meter/person,
- **Comparative reports between similar buildings**,

The EnMS allow the municipality to:

- **Monitor the energy consumption of public buildings**,
- Make consumption and public **budget forecasts**,
- **Prioritise the investments** towards the buildings in poor condition,
- **Save money through energy efficiency**,
- **Raise citizens' awareness** of the concept of rational energy use



Experience of Timisoara Municipality and recommendation

- The building manager's and the energy manager's commitment, as well as the availability of data, are critical to the successful implementation of the EnMS,
- An energy manager should be officially/formally appointed in each public building, with a specific job description,
- The primary data entered into the EnMS should be double-checked to avoid mistakes.
- The results of the buildings' analysis in the EnMS should be widely disseminated (towards local authorities, the managers, users of the buildings, citizens, etc.).
- **Trainings, meetings, working groups**, motivating people involved in the EnMS development.



THANK YOU FOR YOUR ATTENTION !

Contact

Iudit BERE – SEMEREDI

Counsellor – Environmental Directorate
City Hall of Timisoara, Romania

Tel: +40 731 540 932

E-mail: iudit.bere@primariatm.ro

